

Appendix 1

Sallins from Brown to Green

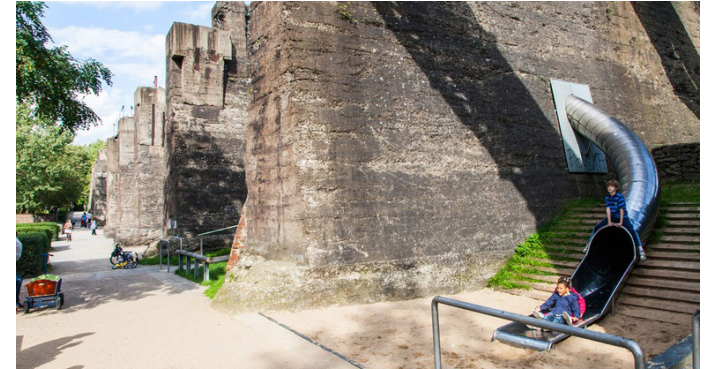
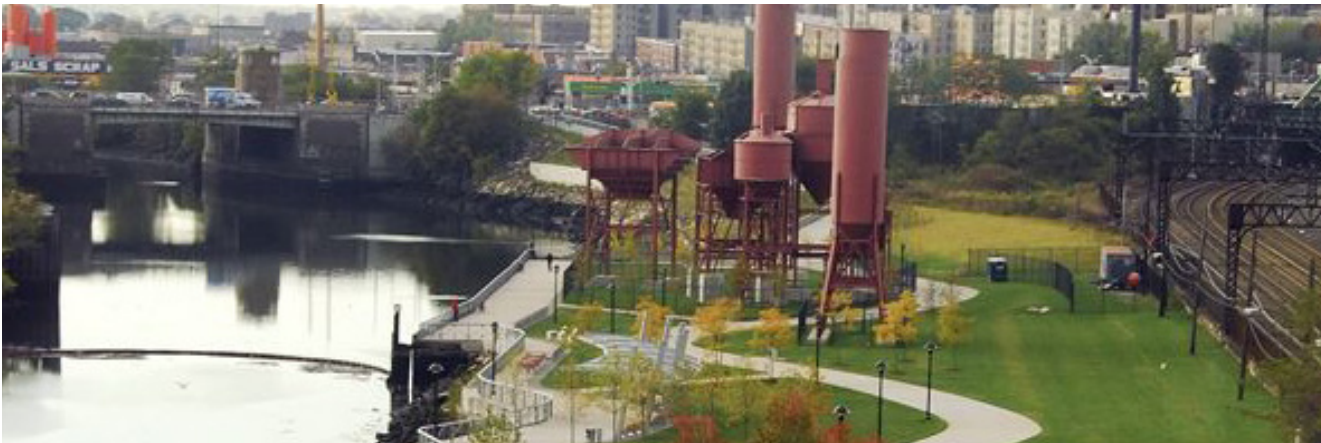
Lower manufacturing and production costs in the developing world have seen a rise in derelict industrial sites all over the western world. These derelict sites often retain a sense of the place to which they belonged, and many have become a part of the cultural heritage of an area.

Odlums mills was established in Sallins in 1915 and used the adjoining canal to transport the finished Porridge oats onward to Dublin and beyond. Its closure in 2008 has left a series of derelict industrial buildings.

In recent years Sallins have seen a massive rise in the amount of new housing. (575% increase from 1991 – 2011) ¹ This change has brought a degree of prosperity to Sallins, however “the Village has “lost much of its sense of place” ².

The transformation of the Grand Canal from a former industrial use to a greenway, provides inspiration for reimagining the industrial heritage of Sallins.

1 CSO/Sallins Community Council submission to Draft LAP
2 (Durney J, Community and Change in Rural Ireland.)



From Industry to parks top clockwise , Slides at Duisberg Nord Landschaftspark Germany, and at bottom climbing wall at Duisberg Nord, Germany, Zhongshan shipyards - China, Concrete Plant Park - New York

This concept could be expanded (similar to the projects highlighted opposite), to provide amenities for Sallins and also the greater Dublin area, by recognising the growing demand for recreational facilities such as Rock Climbing walls, Natural Play spaces, Skate Parks, BMX trails, Horse Riding, Performance Spaces, Kayaking, Natural (wild) Swimming, and Deep Diving with the recreation and access offered by the adjoining canal and Greenway.

This repurposing of the Industrial Heritage at Sallins would retain a strong sense of place of the town while delivering on the need for additional community infrastructure as a “focal point” of the town as highlighted in the recent submission by Sallins Community Council to the Draft LAP.

From industry to parks top left to right,
High Line - New York conversion of abandoned rail line to linear park, Skateboarding at Duisberg Nord, Germany, Flowering trees at Duisberg Nord, BMX trails at Duisberg Nord,

Bottom images - abandoned Odlums factory at Sallins

